



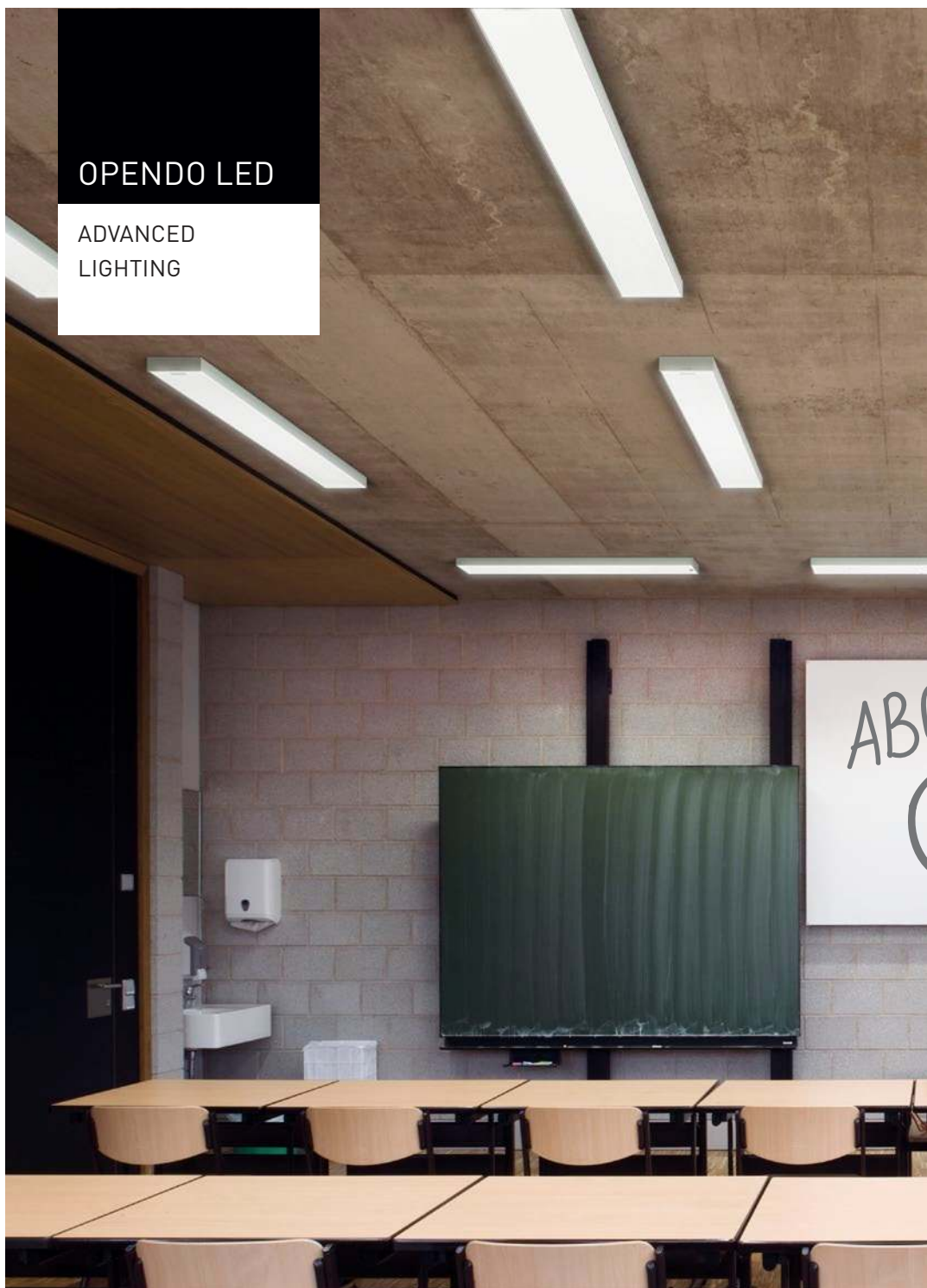
TRI LUX
SIMPLIFY YOUR LIGHT.

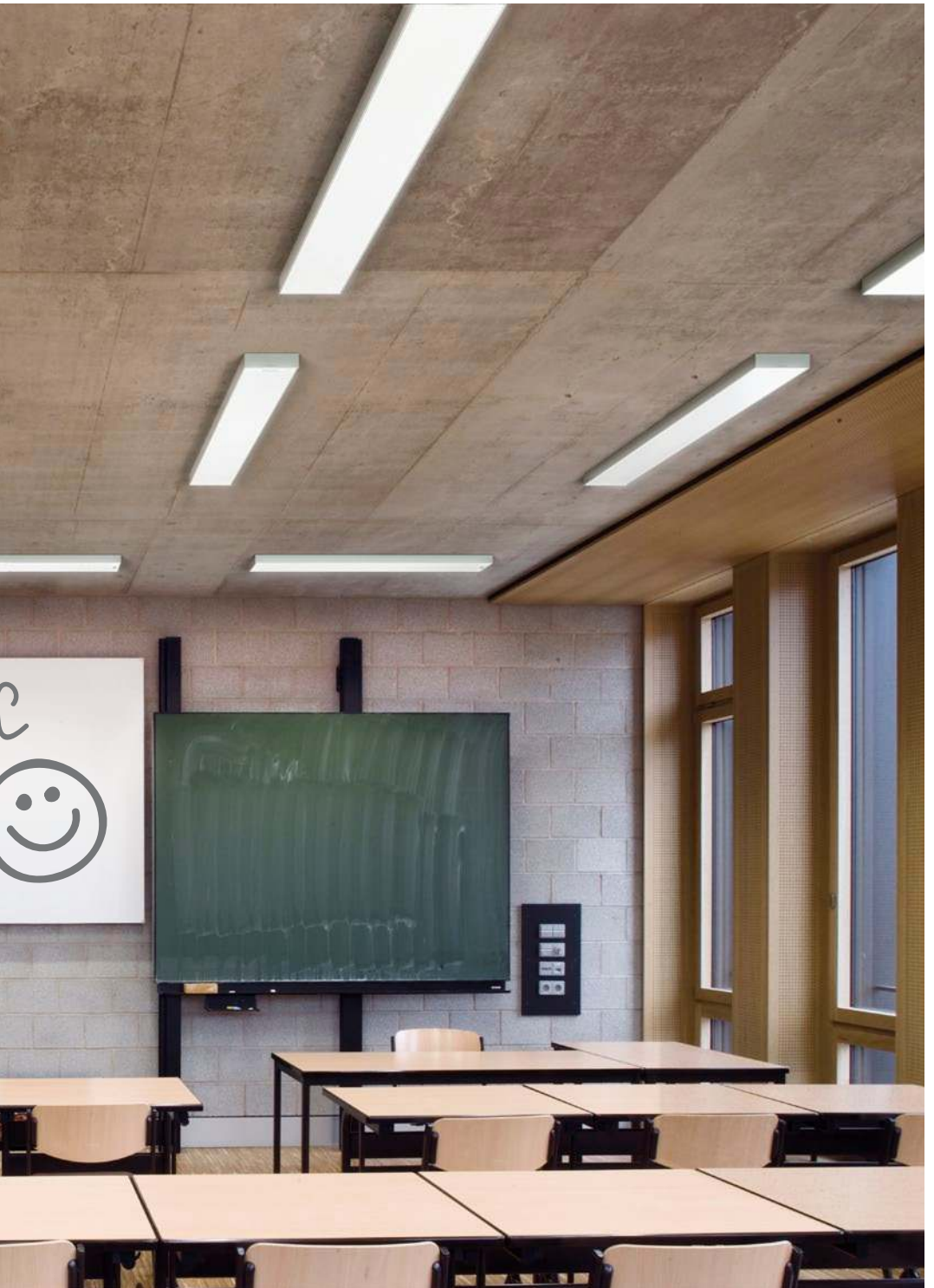
OPENDO LED

Advanced Lighting

OPENDO LED

ADVANCED
LIGHTING

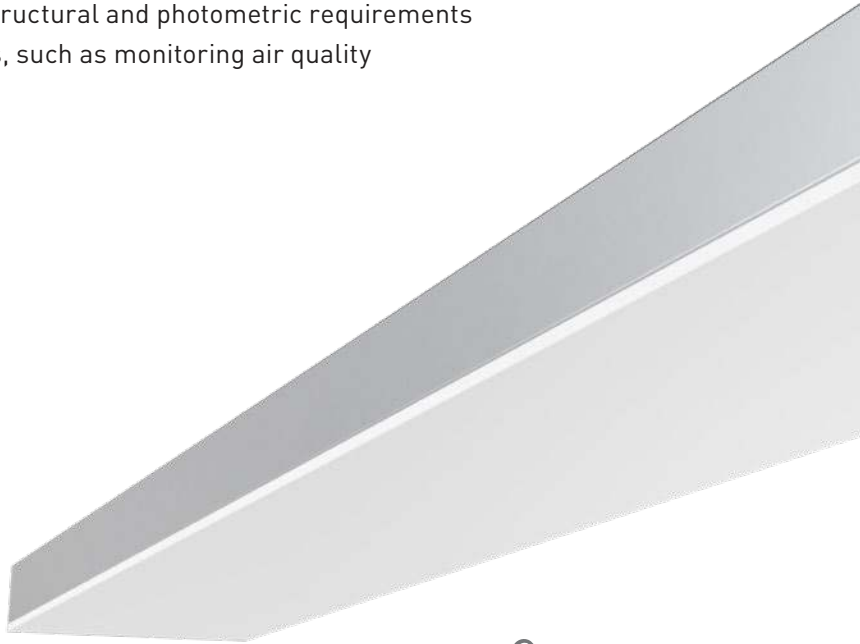




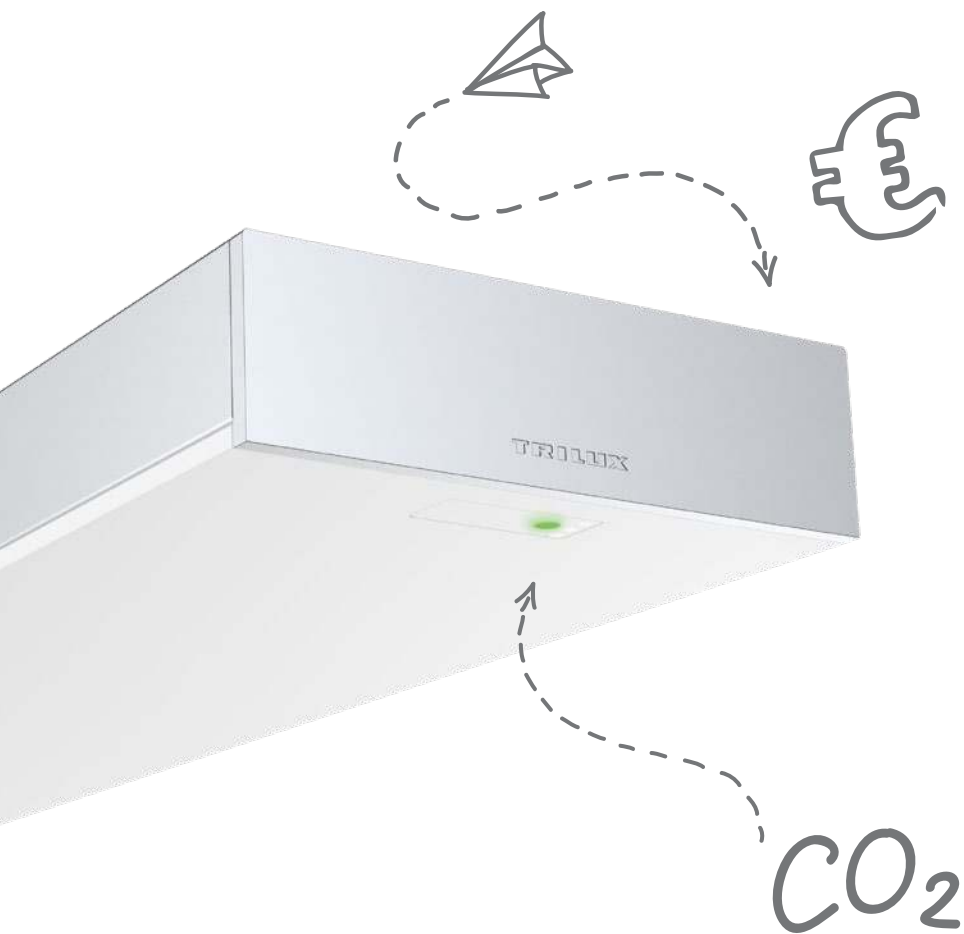
The educational sector places the highest demands on lighting technology and quality, sometimes with complex structural conditions on site. Perfectly adjusted: Thanks to customised light distributions – such as asymmetric blackboard lighting – Opendo LED meets all the requirements for future-proof and sustainable school lighting:

The challenge

- Efficient refurbishment of obsolete conventional luminaire systems
- Tight cost framework with high demands on quality and efficiency
- Specific structural and photometric requirements
- New tasks, such as monitoring air quality



LIKE



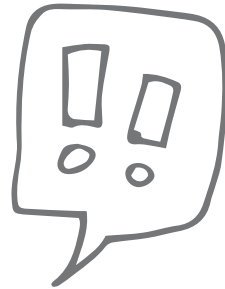
The solution

- Customised solutions for all areas in schools and offices
- High-quality planar light across the entire width of the luminaire
- Refurbishment and maintenance-friendly design
- Turnkey solutions with integrated functional modules, e.g. CO₂ sensors

QUALITY OF LIGHT

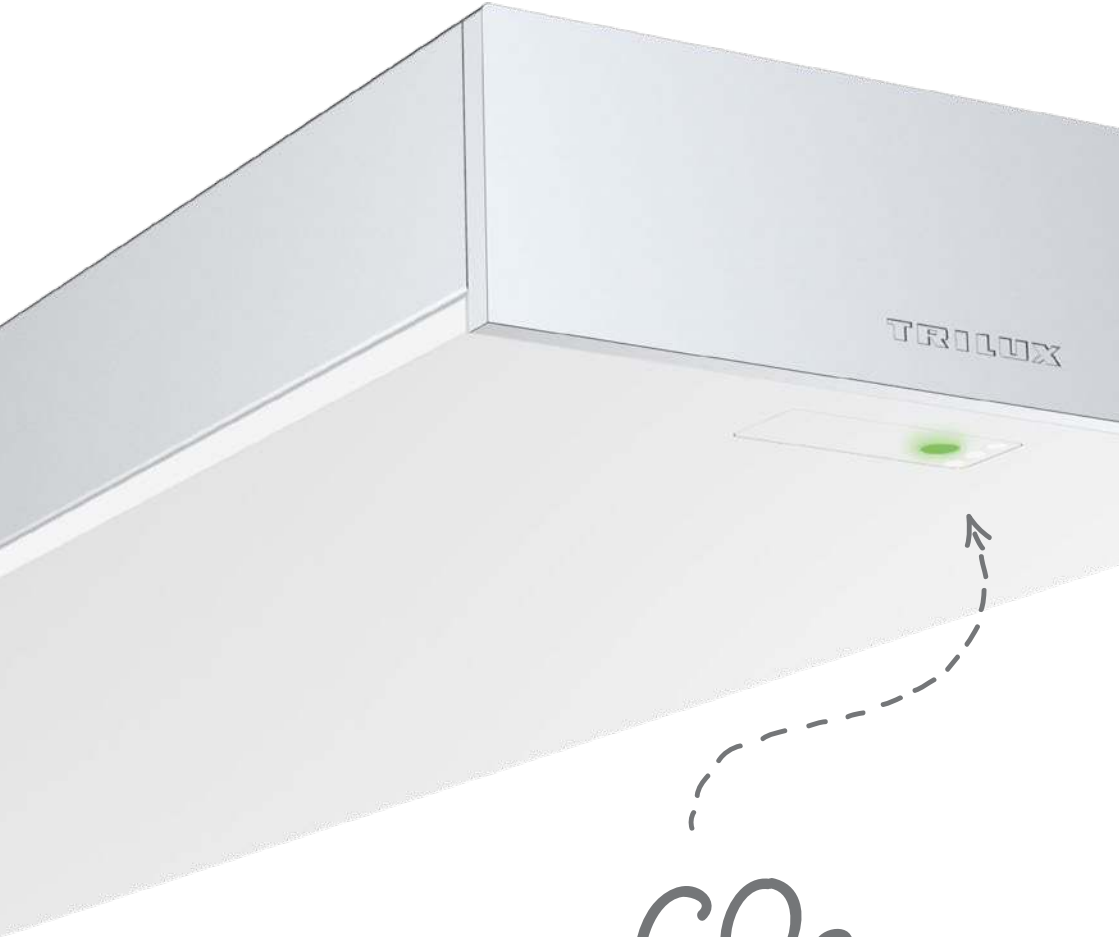


FRESH

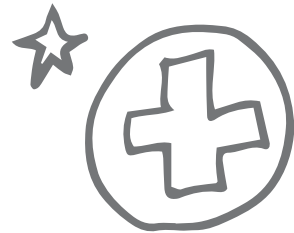
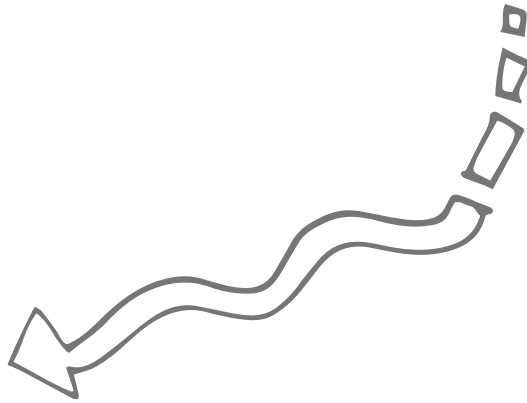


Enthusiasm across the board – full-surface light emission area

Learning and working can be a beautiful experience, in terms of light and luminaire design, anyway: Opendo LED brings high-quality planar light and a new functional/attractive aesthetic to the education and office sector. One of its highlights is the light emission surface, which extends over the entire width of the luminaire and blends into an accentuated light edge around the sides.



CO₂



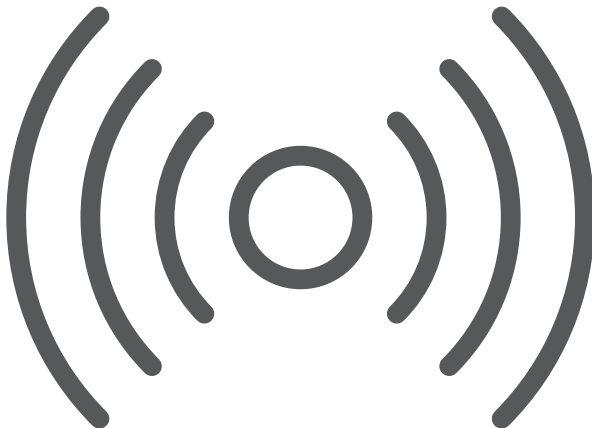
Air quality in check at all times – added value with CO₂ sensors and more

It is capable of much more than just providing light: Opendo LED enables simple networking and is available with integrated function modules on request. In addition to classic sensors for presence and daylight detection, “non-lighting” IoT components can also be integrated quickly and simply. One example are CO₂ sensors that monitor the air quality in the classrooms and display it via a traffic light system.



ADVANTAGES IN OPERATION

High efficiency, low operating costs and excellent quality of light are just some of Opendo LED's strengths. The luminaire can be flexibly equipped with sensors, in particular a CO₂ sensor for measuring air quality. Especially sustainable: The control gear can be replaced without effort in the event of maintenance.



EXPERIENCE OPENDO LED



Experience Opendo LED online and start planning immediately

Experience Opendo LED online and start planning your next school or office project right away. Visit our website for more information and downloadable resources.

Get inspired now and start planning:
www.trilux.com/opendo-led





Exclusive insights video

Find out all the insights from the development of Opendo LED in the new TRILUX Talks video.



Watch now:

www.trilux.com/triluxtalks-education



TRILUX Light Snacks – small bites, big benefits

Satisfy your hunger for knowledge with TRILUX Light Snacks. Let us inform you regularly in a short and compact form about everything important from the world of light.



Subscribe now:

www.trilux.com/light-snacks



Individual light concepts and personal advice

We would love to support you with your next Opendo LED project. Simply contact us:



TRILUX GmbH & Co. KG

Heidestraße · D-59759 Arnsberg
Postfach 19 60 · D-59753 Arnsberg
Tel. +49 29 32.3 01-0
Fax +49 29 32.3 01-3 75
sales@trilux.com
www.trilux.com

TRILUX LIGHTING LIMITED

TRILUX HOUSE, Winsford Way
Boreham Interchange
Chelmsford, Essex
CM2 5PD
Tel. +44 12 45.46 34 63
Fax +44 12 45.46 26 46
info.co.uk@trilux.com
www.trilux.com

TRILUX Vertrieb GmbH

Representative Office
Building: 5EA, Office 808 & 810
P.O. Box: 371040
Dubai Airport Free Zone (DAFZA)
Dubai, United Arab Emirates
Tel. +971 4 6091991
Fax: +971 4 6091826
middleeast@trilux.com
www.trilux.com/en

TRILUX Iluminación S.L.

Avda. Manuel Rodríguez Ayuso 114
Centro Empresarial Miralbueno
Planta 1ª Local P-2
E-50012 Zaragoza
Tel. +34 976.46 22 00
Fax: +34 976.77 40 61
info.es@trilux.com
www.trilux.com

