



## TOKO

### RECESSED LUMINAIRES

Particularly in the fashion area, an ingenious mixture of coherent basic lighting and well-balanced accentuation is required. Here TOKO is just right, since this LED downlight performs both tasks with virtuosity. It is small and unobtrusive in its design. Its fresh light illuminates the room homogeneously as far as the very last corner. Thanks to the 3D faceted reflector and four beam angles, accents can also be systematically set with TOKO.



**Four beam angles thanks to 3D faceted reflector**  
Homogeneous or accentuated illumination is very easy: Beam angles of 28°, 38°, 48° und 60°



**Small dimensions**

Ceiling cut-out only 130 mm, recessing depth only 100 mm



**Well thought-out attachment**

Innovative mounting spring for ease of attachment



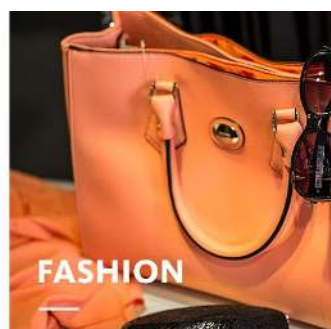
**Large choice of LEDs**

Six white light colours up to 4000 lm



**Intelligent light**

Smart lighting management optionally with control line or wireless



## TOKO

[www.oktalite.com/toko](http://www.oktalite.com/toko)

Luminaire type	Recessed luminaires
Application areas	Base illumination
Range of action	Can be rotated through 355° and swiveled through 90
Fastening	Spring fastening (angle fastening)
Ceiling thickness	1-25 mm
Ceiling cut-out	175 mm
Lighting technology	LED, LED IQ DALI, LED IQ BLE
Beam angel	Spot, Medium Flood, Flood, Wide Flood, Very Wide Flood
LED luminous flux class	1500 lm - 7000 lm
Light colour CRI 80	2700 K, 3000 K, 3500 K, 4000 K
Light colour CRI 90	3100 K - Brilliant Colour, 3200 K - Efficient White, 4000 K - Efficient Cool
Light colour Food	2700 K - Brilliant Food, Meat, Meat + Fish
Variable light colour	Tunable Meat, Active (2700 K - 6500 K)
Supply unit	Integrated driver
	RAL 9005 deep black
Luminaire colour	RAL 9006 white aluminum RAL 9016 traffic white Special colours on request
Surface	Structure powder-coated
Nominal voltage	220 - 240 V, 50/60Hz
Weight	approx. 1.3 kg
Test mark	