



QUIRA

RECESSED LUMINAIRES

QUIRA - the recessed luminaire with impressive characteristics: top-performing and, with two sizes, extremely flexible. QUIRA can be swivelled in to accentuate the merchandise in the salesroom and at the same time it remains flush with the ceiling. And swivelled out, QUIRA reaches every high-level decoration with pin-point accuracy. Optionally fitted with the ACTIVE LED module. This makes the precise adjustment of the light possible as regards intensity and colour temperature.



Calm ceiling appearance

QUIRA tilted in can be used as a downlight



Almost invisible

Can be tilted in through up to 15°



Well thought-out fastening

Our own development for ease of installation



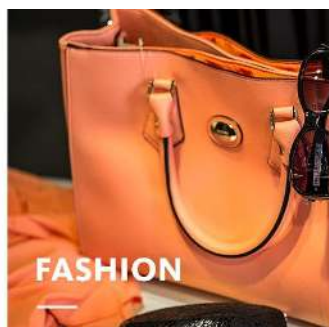
Two sizes

Installation diameters of 130 mm and 155 mm simplify modernisation in the case of existing ceiling cutouts






Intelligent light

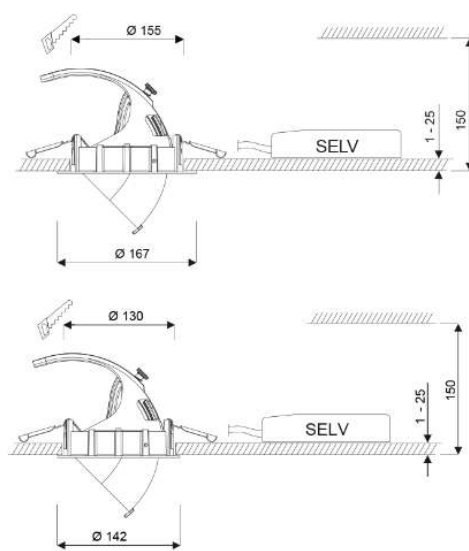
Smart lighting management optionally with control line or wireless



QUIRA

www.oktalite.com/quira

Luminaire type	Recessed luminaire
Application areas	High-level decoration, accent lighting
Range of action	Can be rotated through 355° and swiveled through 85 (15° inwards, 70° outwards)
Fastening	Oktalite folding spring
Ceiling thickness	1-25 mm
Ceiling cut-out	130 mm, 155 mm
Lighting technology	LED, LED IQ DALI, LED IQ BLE
Beam angel	Spot, Medium Flood, Flood, Wide Flood, Very Wide Flood
LED luminous flux class	1500 lm - 5000 lm
Light colour CRI 80	2700 K, 3000 K, 3500 K, 4000 K
Light colour CRI 90	3100 K - Brilliant Color, 3200 K - Efficient White, 4000 K - Efficient Cool
Light colour Food	2700 K - Brilliant Food, Meat, Meat + Fish
Variable light colour	Tunable Meat, Active (2700 K - 6500 K)
Supply unit	Integrated driver
Luminaire colour	RAL 9005 jet black RAL 9006 white aluminum RAL 9016 traffic white Special colours on request
Surface	Structure powder-coated
Nominal voltage	220 - 240 V, 50/60Hz
Weight	approx. 1.1 kg
Test mark	  



All technical data and weight and dimensional data are carefully compiled. Errors excepted. All dimensions in mm · LED service life data: L80/B10 at ambient temperature (ta) 25°C. Rated lamp service life 50,000 h. Min CRI Ra: >80 / >90 · Product images are exemplary and may differ from the original · We reserve the right to make changes which serve the progress · Oktalite Lichttechnik GmbH · Mathias-Brüggem-Straße 73 · 50829 Cologne · T +49 221 59767-0 · F +49 221 59767-40 · mail@oktalite.com · www.oktalite.com · 2023 - 11 - 27