

- °F **FAHRENHEIT LED** : In parameter value or the measured temperature value "°F" unit while this LED lights up. In the hidden menu at the same time the user menu parameter is shown the LED lights up.
- ★ **AUX LED** : If AUX output is active, this LED lights.
- ❄️ **DEFROST LED** : Lights up during DEFROST process.
- ❄️ **COMPRESSOR LED** : If compressor output is active, this LED lights up. While these compressor delays expected, this LED flashes.
- **SET** In "Running Mode", indicates the set value.
In "Programming Mode", indicates the selected parameter value.
- ▲ While in "Programming Mode", provides the transition to the next parameter. If parameter is being adjusted, it increases parameter's value. Constantly holding this key, the parameter value rapidly increases.
- ▼ While in "Programming Mode", provides the transition to the previous parameter. If parameter is being adjusted, it decreases parameter's value. Constantly holding this key, the parameter value rapidly decreases.

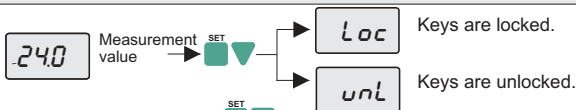
FRONT PANEL COMMANDS

1. Viewing and Changing The Set Value



While in the running mode, if **SET** key is pressed set value is displayed for 3 seconds. While in this case, the set value is changed with **▲▼** keys.

2. Locking and Unlocking Keys

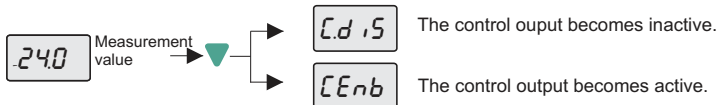


While in the operating mode, if **SET** **▼** keys are pressed together among 2 seconds the *Loc* message is displayed and the keys are locked. If the keys are locked **SET** **▼** keys are pressed for 2 seconds again *unL* message is displayed and key lock is opened and is returned to the normal way of working. While keys are locked, if **SET** key is pressed, the set value can be displayed but the value can not be changed. While the keys are locked, **SET** key outside if a key is pressed the *Loc* message is seen.

3. Manuel Defrost Process

While in the operating mode, if **▲** key is pressed for 2 seconds the defrost process is started as manual. If *ddur = 0*, the manual defrost will also be disabled.

4. Activating / Inactivating The Control Outputs



* When in the running mode, if the control outputs are inactive, *OFF* message displays periodically.

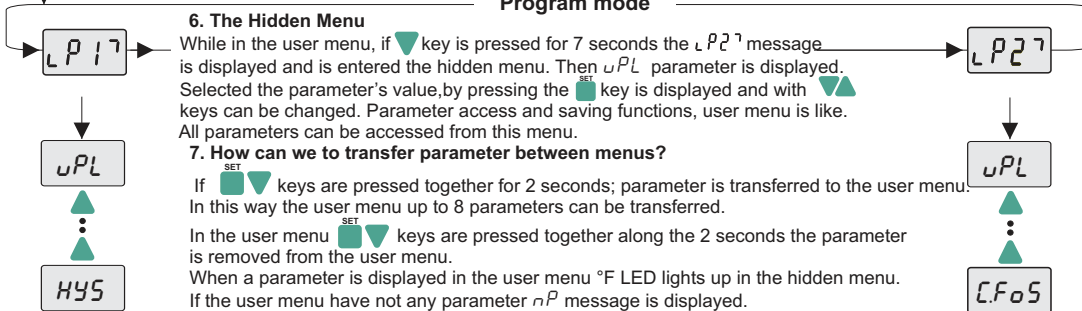
When in the running mode, if **▼** key is pressed for 2 seconds, *Cd 15* message is displayed and control outputs becomes to the inactive position, the device works as the indicator. When the control outputs are disabled; if **▲** key is pressed for 2 seconds *CEnb* is disabled and the device continues to do control function.

5. Changing Parameter Values

▲ **▼** keys are pressed together for 2 seconds *LP 17* is displayed and the user menu is entered, afterwards first parameter's name is displayed in the user menu.

While a parameter was selected, by pressing to **SET** key parameter's value is displayed, the displayed this parameter can be changed with **▲▼** keys. When the parameter name is shown, no action is done after 3 seconds or to the **SET** key is pressing again to return to the parameter's name. When the parameter name is shown, **▲▼** keys are pressed together immediately without waiting to get out of this process.

Program mode



6. The Hidden Menu
While in the user menu, if **▼** key is pressed for 7 seconds the *LP 27* message is displayed and is entered the hidden menu. Then *uPL* parameter is displayed. Selected the parameter's value, by pressing the **SET** key is displayed and with **▲▼** keys can be changed. Parameter access and saving functions, user menu is like. All parameters can be accessed from this menu.

7. How can we to transfer parameter between menus?

If **SET** **▼** keys are pressed together for 2 seconds; parameter is transferred to the user menu. In this way the user menu up to 8 parameters can be transferred.
In the user menu **SET** **▼** keys are pressed together along the 2 seconds the parameter is removed from the user menu.
When a parameter is displayed in the user menu °F LED lights up in the hidden menu. If the user menu have not any parameter *nP* message is displayed.

ERROR MESSAGES

- PFR** Means, thermostat probe is broken.
- PSC** Means, thermostat probe is short circuit.
- Temperature value is higher than the scale.
- Temperature value is lower than the scale.

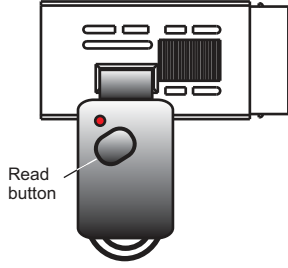
ALARM SITUATION

- WW**
24.0
AAA 1. When the alarm situation occurred, the measured value flashes in the indicator and if "Lnd" parameter is not "0" is given audible alarm by the device. While there are a audible warning; **▲** key is pressed, the audible warning will be disabled.
- WW**
EA
AAA 2. External alarm is activated but output's is not affected by this situation.
- WW**
SA
AAA 3. Except that the alarm has been activated and external alarm output relay is active when the show shut down. (off situation).
4. Buzzer voice warning is given; if any key is pressed the buzzer will be silenced.

HOW CAN WE RETURN THE DEVICE TO THE FACTORY SETTINGS

▼ Key is held down while the device is powered up the *dPFR* message will see and restore the factory parameters.

ENDAKEY PARAMETER TRANSFER



TRANSFERRING THE PARAMETERS FROM ENDAKEY TO DEVICE

While in "Running Mode", if ∇ key on device or "Read" button on "ENDAKEY" is pressed, "dL" message appears on display and parameters are read and transferred to the device. If the parameter transfer is successful, the "rEF" message appears and the device begins to work with the loaded parameter values. If the parameters are wrong, incorrect or "ENDAKEY" is faulty, "Err" message appears. Parameters will not be changed on device.

TRANSFERRING THE PARAMETERS FROM DEVICE TO ENDAKEY

While in "Running Mode", if \blacktriangle key is pressed on device, "uL" message appears on display and parameters are read and transferred to the device. If process succeeds, "Suc" message appears. In case of failure, "Err" message appears. Parameters will not be changed on device.

NOTE 1 : No power-up required for transferring the parameter by using "ENDAKEY". For long battery life, "ENDAKEY" must be disconnected from device after the transferring process.

NOTE 2 : Please specify at order "ENDAKEY" if required.

CONTROL PARAMETERS		MIN.	MAX.	UNIT	DEF. SET
μPL	The upper limit of the setpoint	-600	μPL	°C	150
$L o L$	The lower limit of the setpoint	$L o L$	1500	°C	-60
HYS	Cooling hysteresis	0.1	200	°C	2
oFF	Cooling offset value	-200	200	°C	0
CONFIGURATION PARAMETERS					
ζtYP	Control type selection ($HE = (*)$ heating control is selected, $Co =$ Cooling control is selected.) ζtYP parameter as HE is selected, the defrost function of the device is disabled.	Co	HE		Co
$Unit$	Temperature unit (Devices with part code suffix 'F' have deg F as the default 'Unit').	°C	°F		°C
$dPnt$	Decimal point ($no =$ decimal point isn't shown $22^{\circ}C$, $YES =$ decimal point is shown $22.3^{\circ}C$.)	no	YES		no
Snd	Buzzer sound type selection (6 different sound types can be selected, if 0 is selected, sound warning is canceled during alarm).	0	6		0
$d.inP$	Digital input types. nd : Digital input unused. EA : External alarm. EA message flashes in the display. Output unchanged. SA : Important external alarm. SA message flashes in the display. Relay output is turned off. HC : Control type. ζtYP parameter is changed. (If $HE = Co$, If $Co = HE$) dF : Defrost operation is started.	nd	dF		nd
ddi	Digital input delay. The period of the digital inputs to be active.	0:00	99:00		0:00
dPo	Digital input polarity. $cL =$ While a digital input contact is closed, it is activated. $oP =$ While a digital input is opened, it is activated.	cL	oP		cL
COMPRESSOR PROTECTION PARAMETERS					
ζPon	Delay time for the compressor after power is on.	0:00	99:00	min:sec	1:00
ζFos	Delay time required for the compressor to restart following a stop.	0:00	99:00	min:sec	1:00
ζPPn	On time for the compressor output in the case of probe failure.	0:00	99:00	min:sec	0:00
ζPPF	Off time for the compressor output in the case of probe failure	0:00	99:00	min:sec	1:00
DEFROST CONTROL PARAMETERS					
$dSnL$	Smart Defrost selection (no : Defrost counter (between 2 defrost duration) decrease irrespective of $d.inL$ status of the compressor. YES : Defrost counter decreases as long as compressor work).	no	YES		no
$ddur$	Defrost duration (If $ddur=0$, automatic and manual defrost are disabled.)	0:00	99:00	min:sec	1:00
$d.inL$	The time between 2 consecutive defrosts.	1:00	99:00	hr:min	1:00
$ddSP$	During defrost, display configuration ($rE =$ Real temperature is displayed during defrost. ($Lc =$ The temperature which is measured before defrost is displayed during defrost.	Lc	rE		Lc
$ddrE$	Delay time for display real temperature after defrost is over.	0:00	99:00	min:sec	1:00
$dPon$	Defrosting process begins with energy ($no =$ Defrost process doesn't start when the energy comes. $YES =$ Defrost process starts when the energy comes.)	no	YES		no
$d.dPo$	Delay time for defrosting after power is on.	0:00	99:00	min:sec	1:00
ALARM CONTROL PARAMETERS					
$RuPL$	Limit for upper alarm level. When $RtYP$ is changed, $RuPL$ should be readjusted.	$RLoL$	1500	°C	150
$RLoL$	Limit for lower alarm level. When $RtYP$ is changed, $RLoL$ should be readjusted.	-600	$RuPL$	°C	-60
$RHYS$	Hysteresis alarm	0.1	200	°C	2
$RtYP$	Alarm configuration. ($RbS =$ Independent alarm. Alarm values are $RLoL$ and $RuPL$.) ($rEF =$ Relative alarm. Alarm values are $SET - RLoL$ and $SET + RuPL$.) NOTE: Upper and Lower alarm level variables are determined according to the "RtYP" parameter. If $RtYP = RbS$, $RLoL$ and $RuPL$. If $RtYP = rEF$, $L o L = SET - RLoL$ and $RuPL$.	RbS	rEF		RbS
$RdFL$	Time delay to display alarm message after alarm is on.	0:00	99:00	min:sec	0:00
$RdPo$	Time delay to display alarm message after power is on.	0:00	99:00	hr:min	0:10
AUX CONTROL PARAMETERS					
$oSEt$	AUX Output setpoint.	-600	1500	°C	-200
$oHYS$	AUX Output hysteresis.	0.1	200	°C	20